



SUMMARY

- INTRODUCTION
- CONTEXT AND METHODOLOGY
- OUR PROJECTS - TUNISIA
- OUR PROJECTS - WORLDWIDE



INTRODUCTION

With a strong foundation built on extensive local field experience, our organization is now expanding internationally.

Our approach focuses on implementing concrete social and environmental projects, based on sustainable entrepreneurial solutions tailored to the specific needs of each territory.

We are committed to long-term project sustainability rather than one-off actions, while staying true to our core DNA: education everywhere, for everyone.

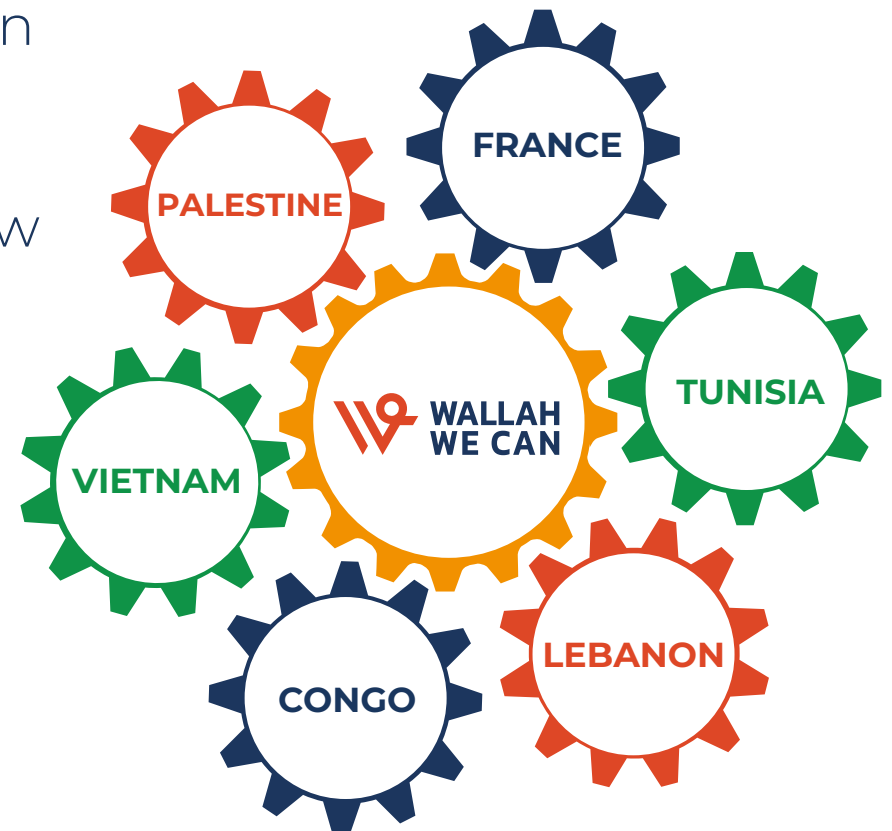


CONTEXT

Founded in Tunisia, Wallah We Can operates close to local realities and works to combat the inequalities faced by communities, particularly in terms of education, healthcare, and access to social and economic rights.

Established in 2012, the organization develops concrete and sustainable projects that combine education, community engagement, and empowerment, based on close collaboration with local stakeholders.

With Wallah We Can Worldwide, we are now expanding this approach internationally. For each territory in which we operate, we adapt our solutions to the needs identified beforehand, ensuring the sustainability and long-term impact of our actions.



OUR APPROACH

Each project led by Wallah We Can begins with the identification of a real need, directly observed in the field.

Based on this assessment, the organization develops tailored solutions in collaboration with local stakeholders and the communities concerned, ensuring the relevance of each project.

These initiatives are designed to be sustainable over time: regular monitoring and continuous evaluation integrating feedback from beneficiaries are systematically implemented.

This hands-on approach helps strengthen the autonomy of both individuals and supported structures, reflecting the long-term vision and ambition of Wallah We Can Worldwide.



OUR PROJECTS - TUNISIA

GREENSCHOOL :

We transform public institutions into autonomous educational ecosystems. In Tunisia, the GreenSchools of Makthar and Bizerte combine education, agriculture, and local production through farming and agricultural activities under the brand “WWC le label,” led by the association.

These productions, carried out within the GreenSchool farms, with the involvement of employed parents of students,, generate income that is reinvested into the schools, while also contributing to job creation and reducing unemployment in local communities.



GreenSchool

GREENSCHOOL Makthar

Our pilot project



ECOLIBREE

This project, led by Wallah We Can, aims to promote menstrual justice in the school environment. Developed in partnership with the textile industry, it is based on the production and commercialization of reusable menstrual underwear, as well as on efforts to break taboos around menstrual hygiene through dedicated educational and awareness workshops for young people. Revenue generated through international sales helps fund the free local distribution of menstrual products and the delivery of awareness workshops, thereby contributing to menstrual justice and supporting girls' continued access to education.



ecolibree

Committed to fight for menstrual justice



THE CHILDREN'S EMBASSY :

The Children's Embassy is an initiative led by Wallah We Can, aimed at strengthening access to education and promoting youth civic engagement in vulnerable contexts.

This project helps professionalize school and extracurricular clubs, provides free academic support to children enrolled in GreenSchools, and incorporates a nutritional component through the distribution of 100% natural protein bars produced by the organization.

It also offers training and professional integration opportunities for unemployed graduates in the field. The Children's Embassy is designed to be gradually expanded across Tunisia, as well as to our international projects, with scaling based on the specific needs identified in each area of intervention.





WWC BAR PROTEIN



CRESCENDO :

CRESCENDO is a musical project led by Wallah We Can that uses music as a tool for expression, cooperation, and youth civic engagement.

The project takes place in a context where school violence is a major issue in Tunisia. CRESCENDO reflects a strong commitment: promoting youth rights and speaking out against such violence.

The project has already brought together major artists from the Tunisian music scene such as ALA and Lotfi Bouchnak, blending rap and classical music, French and Tunisian dialect, thereby breaking certain stereotypes while reaching a wide and diverse audience.

CRESCENDO is a project by young people, for young people!





Sources Tunisia 88



GreenSchool



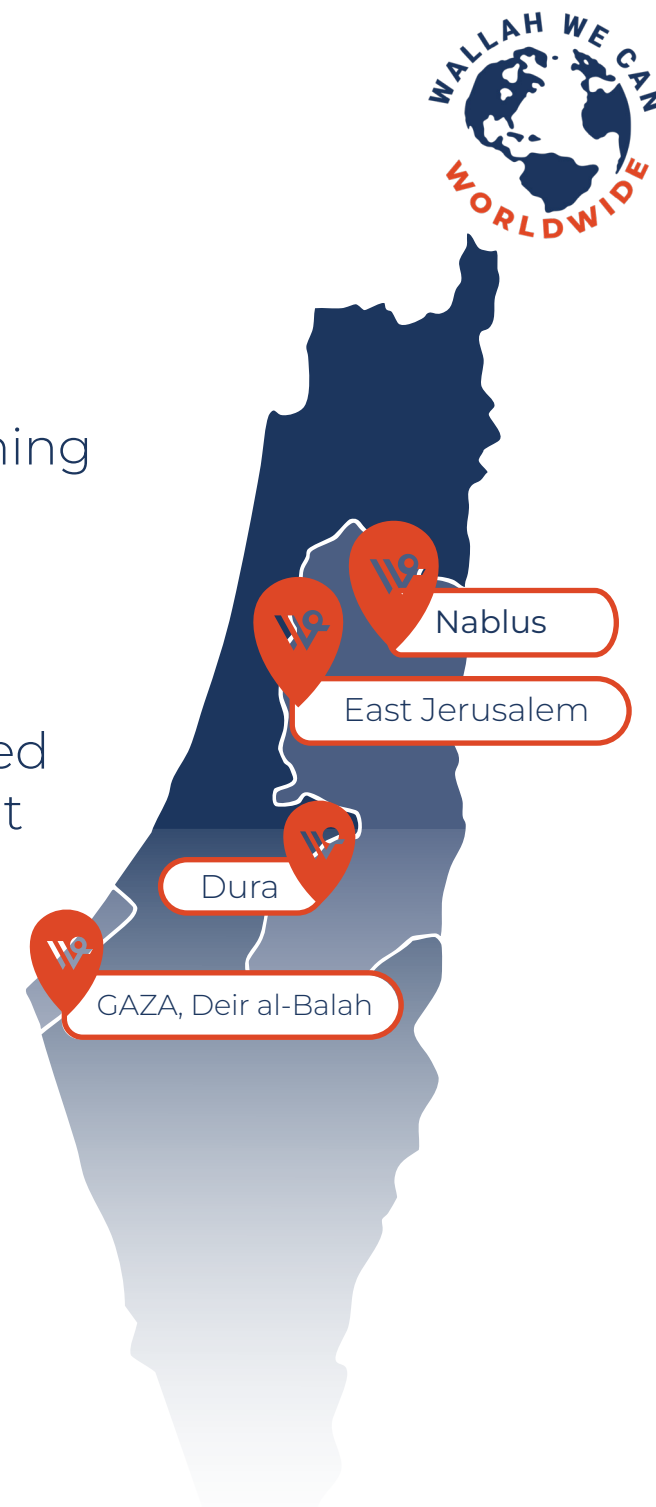
WALLAH WE CAN PALESTINE

Context & Challenges

In Palestine, Wallah We Can operates across all territories, both in Gaza and the West Bank, to restore and secure learning environments, maintain educational continuity in a context of crisis and occupation, and strengthen local resilience through the development of community initiatives.

Due to the Israeli occupation, children face severely degraded learning conditions in the West Bank and nearly nonexistent ones in Gaza. Security pressure, chronic instability, and immense humanitarian needs have a lasting impact on access to education.

The actions carried out by Wallah We Can address urgent needs while also contributing to the development of sustainable solutions adapted to local realities.



INTERVENTIONS BY TERRITORY

Gaza — Habiba School (Deir El-Balah)



Recreate a social and protective educational environment for children who have survived military conflict, by combining daily education, nutrition, and recreational activities.

- **Infrastructure & Equipment :**

Equipped classrooms, sanitation facilities, solar energy systems, and outdoor spaces.

- **Operations :**

Educational staff, meals, school supplies, hygiene support, and educational activities.



GAZA, Deir al-Balah



INTERVENTIONS BY TERRITORY

Dura – “Palestine” and Al Zahra Schools

The works, carried out in partnership with the Municipality of Dura, aim to secure and upgrade existing infrastructure in order to immediately improve the quality and safety of learning.

- **“Palestine” School**

- Main deliverables : school furniture, carpentry work, lighting, and educational equipment.

- **“Al-Zahra” School**

- Works : Renovation of classrooms, lighting, common areas, and educational equipment.

- Infrastructure : classrooms, laboratories, cafeteria, and sanitation facilities.





INTERVENTIONS BY TERRITORY

Dura – Al-Baydar Cooperative

The project includes support for an already established and legally registered women’s cooperative, with the aim of strengthening a local agri-food production ecosystem.

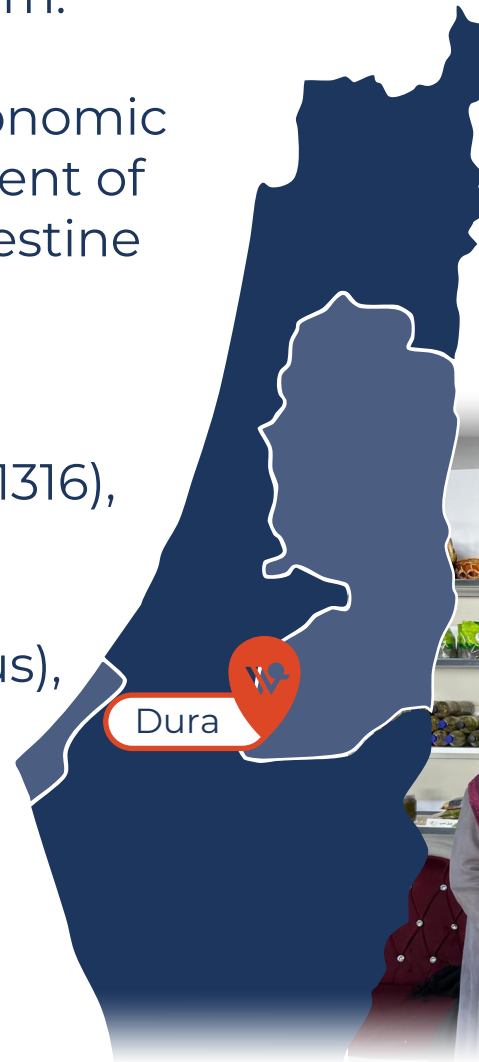
This initiative contributes to local economic empowerment and to the development of the GreenSchool concept for the Palestine and Al-Zahra schools.

- **Status :**

- Registered cooperative (No. 1316), commercial brand “Al-Baydar.”

- **Production :**

- Maftoul (Palestinian couscous), grape molasses, vine leaves, apple cider vinegar, makdous, spices, and dried herbs.



INTERVENTIONS BY TERRITORY

Nablus (Palestine) - Samir & Omar Abdelhadi Cultural Center



Opening

In Nablus, at the heart of a densely populated neighborhood, children and families have very few safe spaces to learn, create, or gather.

In a city where children represent 42% of the population, the municipality of Nablus has made child protection, access to culture, and social development a priority.

The Samir & Omar Abdelhadi Cultural Center is an already constructed building (1,500 m², 2 floors) that has been handed over to the municipality.

However, it now needs to be furnished and equipped in order to become operational.



PROJECT SUMMARY



Purpose

Furnishing, equipment, and operational launch of a multifunctional cultural center.



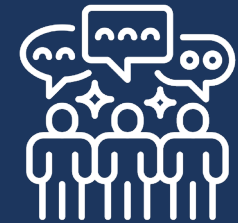
Location

East Nablus
(area with no existing cultural center)



Project Lead

Municipality of Nablus
(semi-public institution)



Priority Target Group

Children,
youth,
and women.



MAIN PLANNED ACTIVITIES

Examples

- Visual arts and crafts (drawing, calligraphy, recycling, embroidery, soap-making).
- Music (piano, oud, guitar, choir) and artistic workshops.
- Theater/cinema and cultural events (ceremonies, screenings, conferences).
- Children's library, reading clubs, and language programs.
- Summer Club (June–July): **100** children.

WHAT THE CENTER WILL ENABLE

Expected Impact

- Create a safe, inclusive, and accessible space for children and families.
- Develop creativity and skills (arts, music, reading, languages, theater).
- Deliver awareness-raising and prevention initiatives (including child protection).
- Strengthen social cohesion and local opportunities (artists, youth, women artisans).

KEY FIGURES



Nablus

~ **177 000** Residents

Proportion of children

42 % of the population

Building

1 500 m²

– 2 floors + terrace

Delivery

2025

Building completed
– not yet operational

Construction cost

1 000 000 USD

(funded by private donors)

FUNDING REQUEST

The requested funding aims to make the center immediately operational.

Phase 1

Estimated implementation period: 6 months

125 000 USD

Furnishing and equipment

Phase 2

100 000 USD

Future, separate phase
Installation of solar panels

WALLAH WE CAN LEBANON



In Lebanon, Wallah We Can Worldwide is developing a GreenSchool within the Antonine Sisters' orphanage, located in Achkout (Keserwan), about 30 km from Beirut.

This 33,000 m² site accommodates between 80 and 100 orphans, children, and young adults.

The project aims to transform the orphanage into an autonomous educational and agricultural ecosystem, based on the GreenSchool principles: education, environmental sustainability, and energy and economic self-sufficiency.



WALLAH WE CAN FRANCE



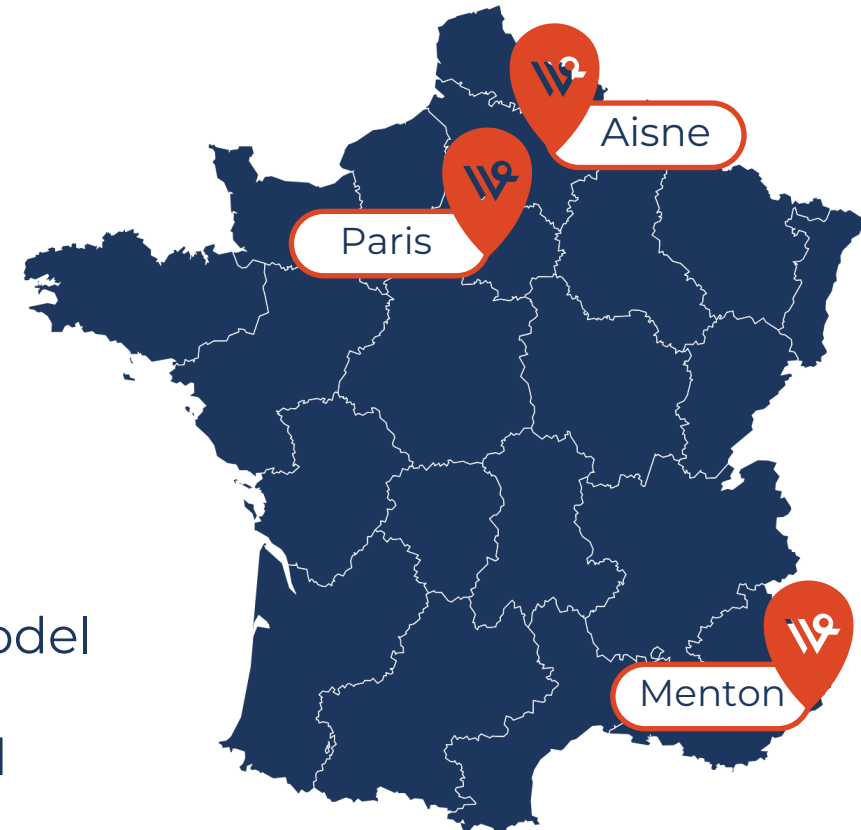
1. Ecolibree, Menstrual Justice

Born in Tunisia, where menstrual poverty is a major barrier to schooling and dignity for many adolescent girls, the Ecolibree project has been deployed in France to address an issue that remains largely invisible.

In France, we carry out:

- Menstrual education workshops in educational settings.
- Distributions of menstrual underwear kits, particularly in the Aisne department (Hauts-de-France region).

It is also in France that our solidarity purchasing model was born: 1 purchased = 1 donated.
(For every kit sold internationally, one kit is donated to a young girl in Tunisia, linking social economy with international solidarity.)



OUR ACTIONS



2. Agreements, Academic Partnerships and Awareness-Raising

We have established a partnership with **La Voix de l'Enfant**, the leading federation of child protection associations in France, which notably supports the deployment of our project in Gaza.

We have signed agreements with three social partners for the provision of hygiene protection kits to young people in vulnerable situations.

As part of the development and promotion of our initiatives, we have concluded several agreements with higher education institutions, notably **Sciences Po Menton** and **ESSEC Business School in Paris**.

These partnerships help strengthen students' awareness of social and environmental issues, while creating bridges between academic engagement and field action.





Embassy of Palestine in Tunisia



Inauguration of the Palestine School in Dura



Partnership in Aisne & Coordination with our partner, the Eboko Foundation, for the delivery of washable sanitary pad kits.



Inauguration of the School in Dura



Delivery of our reusable hygienic underwear kits to Vietnam.



Distribution of snacks and school supplies at Habiba School in Gaza.



Signing of an agreement with the Municipality of Dura.



Construction site of the Palestine School in Dura.





IN COLLABORATION WITH



ACT TOGETHER, NOW.

Wallah We Can implements projects that have already benefited more than 9,000 children across 3 continents. The organization's actions contribute to several United Nations Sustainable Development Goals (SDGs):



To continue its initiatives, Wallah We Can Worldwide is seeking financial or technical support, as well as field collaborations with committed partners.

To support Wallah We Can Worldwide's actions and contribute to the development of our projects, you can:

Become a member of Wallah We Can Worldwide, wherever you are.

Click here :



Support our projects by making a donation

Click here :



ARTICLES DE PRESSE

Challenge^s

euronews.



Forbes



TV5
MONDE

Le Monde

ALJAZEERA



LA STAMPA

L'EXPRESS

ARAB NEWS



Wallah We Can



wallah_we_can



Wallah We Can



Wallah We Can Global

 lotfihamadi@wallahwecan.org

 <https://wallahwecan.org/>

 +216 27 068 084


WALLAH
WE CAN